

State of Hawaii  
DEPARTMENT OF LAND AND NATURAL RESOURCES  
DIVISION OF STATE PARKS  
P.O. Box 621  
Honolulu, HI 96809  
**ADDENDUM NO.1**  
TO  
JOB NO. 26-SPH-002  
RAINBOW FALLS  
INSTALL WOODEN GUARDRAILS & CATTLE GATES  
HILO, HAWAII, HAWAII

This addendum as issued shall become part of the Contract Documents for the subject project. The bid documents, plans, and specifications shall be amended as follows:

**A. REQUEST FOR INFORMATION (RFI)**

1. The specifications call for: To be eligible to submit a bid, the Bidder must possess a valid State of Hawaii Contractor's license classification General B. Can an A license be acceptable?

**Response: Yes, A and B license is acceptable.**

2. Can metal W-Beam Guardrail be used in lieu of wood guardrail? The wood guardrail is not stocked locally and will be very hard to maintain if damaged in an accident?

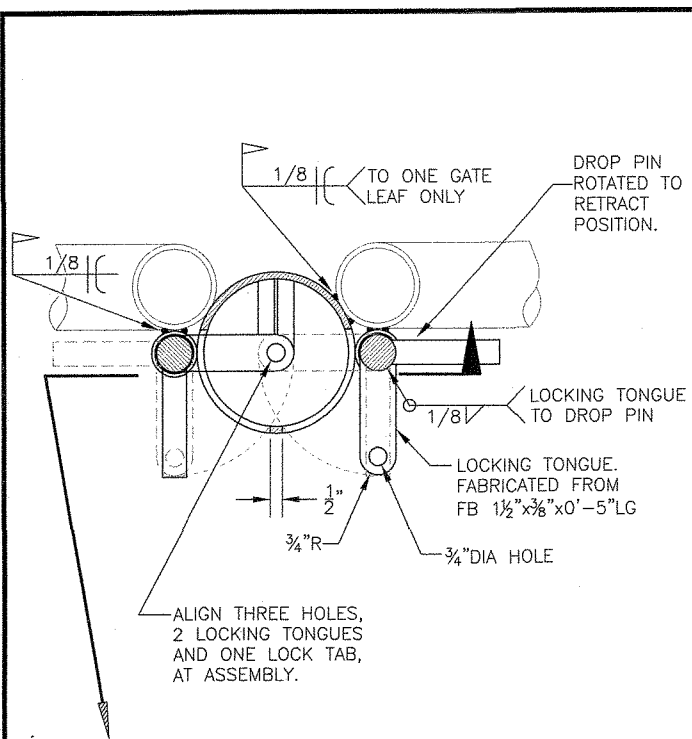
**Response: The substitution of W-beam guardrails will not be accepted.**

3. If a natural looking metal guardrail is needed, a stained guardrail can be used ....  
<https://www.natina.com/project-item/celebrating-transformation-in-superior-arizona/>

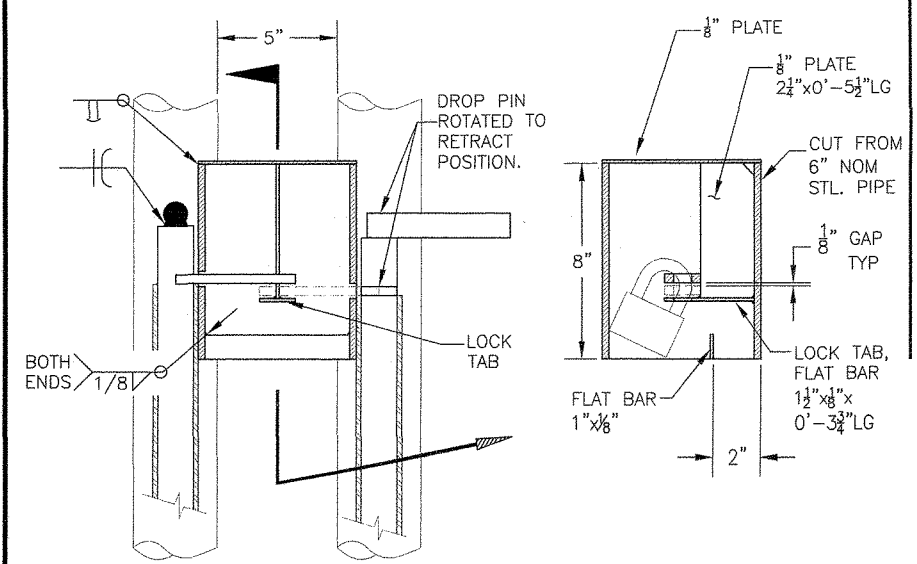
**Response: The substitution will not be accepted.**

4. Can you please provide a drawing for the cattle gate, as there are many types and many diameter pipes that can be used.

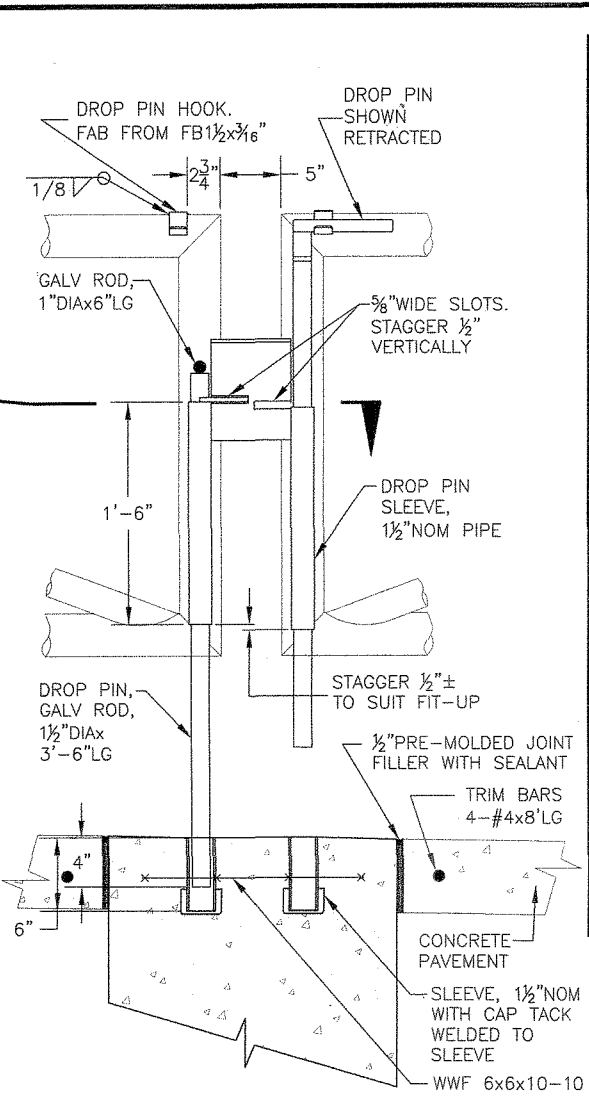
**Response: Please see attached reference drawing. Contractor is responsible for all field verifications and measurements. Shop drawings shall be submitted prior to fabrication and installation.**



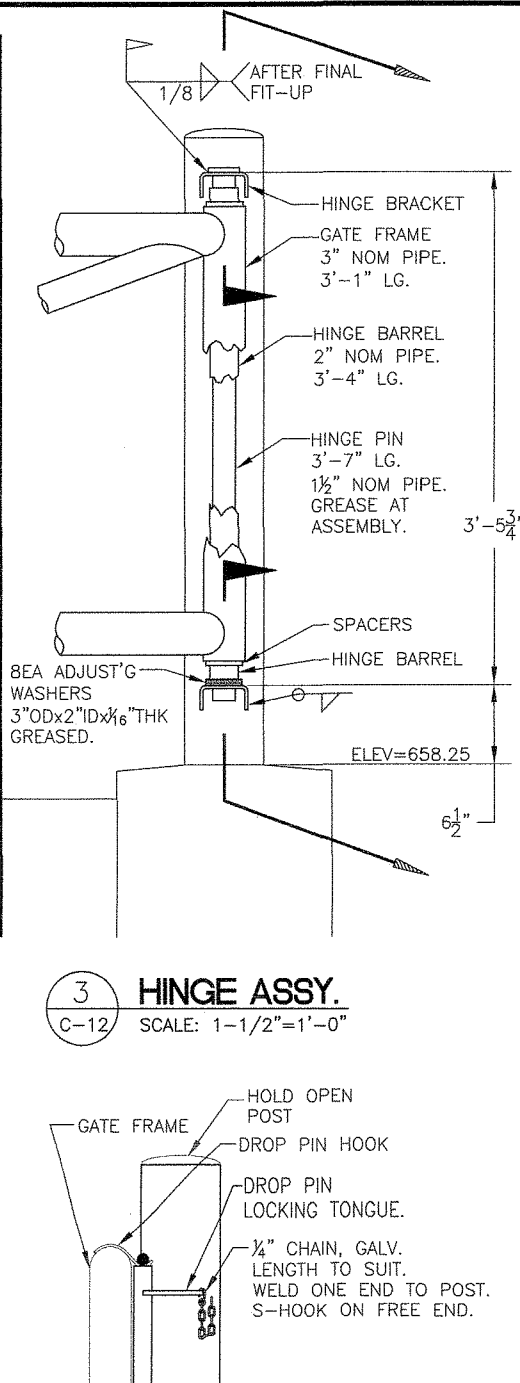
**1 LATCH DETAILS**  
C-12 SCALE: 3"=1'-0"



**2 LATCH ASSY.**  
C-12 SCALE: 1-1/2"=1'-0"

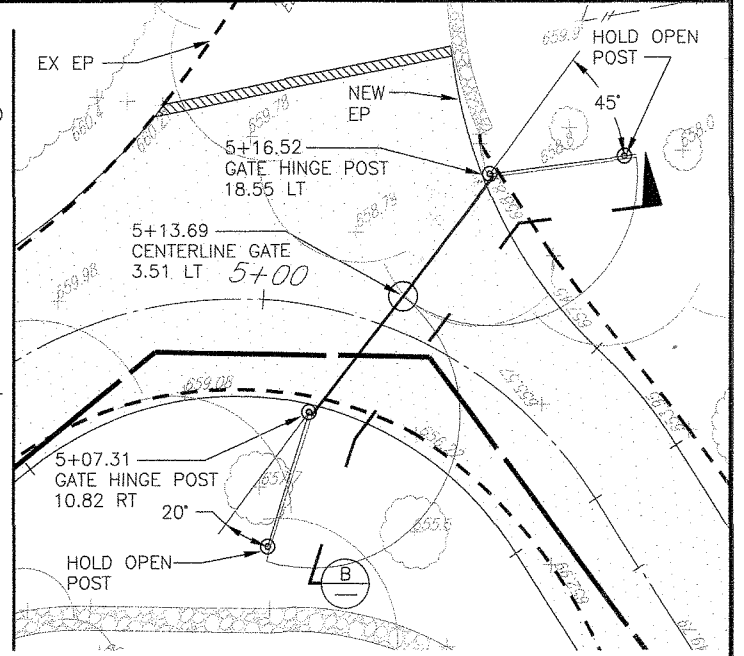


**3 HINGE ASSY.**  
C-12 SCALE: 1-1/2"=1'-0"



**4 HINGE DETAILS**  
C-12 SCALE: 3"=1'-0"

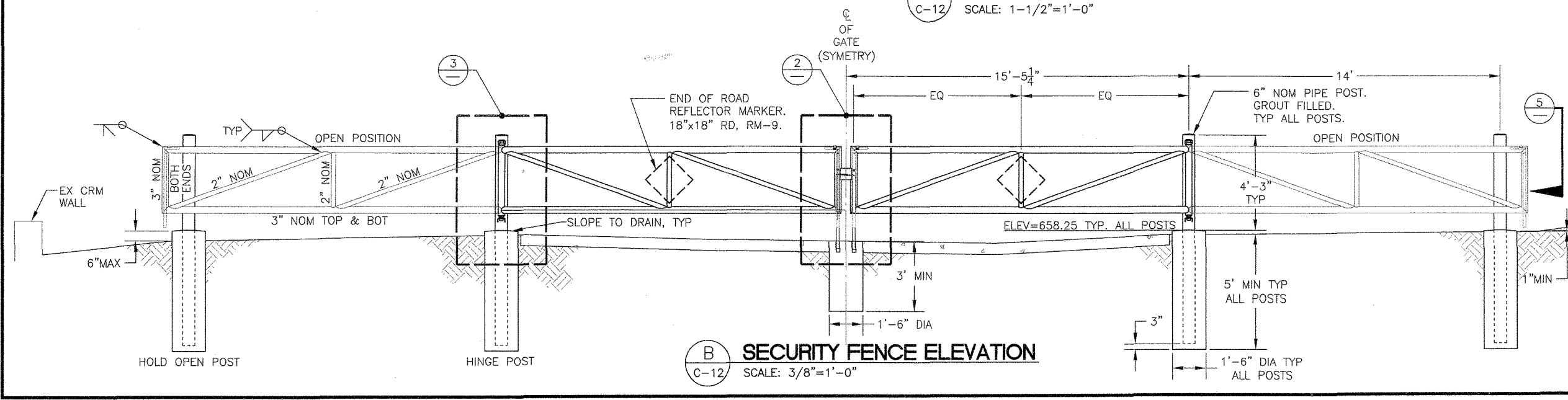
**5 HOLD OPEN CHAIN DETAIL**  
C-12 SCALE: 1-1/2"=1'-0"



**A GATE PLAN**  
C-12 SCALE: 1"=10'

- GENERAL NOTES**
1. ALL ROUND PIPE SHALL BE ASTM A53, TUBING SHALL BE ASTM A500, AND PLATE AND FLAT BAR SHALL BE ASTM A 36.
  2. ALL PIPE SHALL BE SCHEDULE 40.
  3. ALL WELDS ARE 3/16" UNLESS OTHERWISE NOTED.
  4. HOT DIP GALVANIZE ALL ASSEMBLIES AFTER WELDING. FIELD WELDS SHALL BE COATED WITH 2 COATS OF ZINC RICH PRIMER.
  5. APPLY 1 COAT OF PRIMER AND 2 COATS OF HIGH GLOSS YELLOW ENAMEL TO GATE FRAME AND POSTS. WRAP PAINTED ELEMENTS WITH 2" WIDE REFLECTIVE TAPE BANDS SPACED AT 12". ALTERNATE SILVER AND RED BANDS.
  6. CONTRACTOR TO PROVIDE PAD LOCK, BY MASTER. "MAGNUM" 2 1/2" LAMINATED BODY WITH 1 1/2" TALL BY 1 1/4" WIDE SHACKLE, PN M15XKABL8 OR APPROVED EQUAL.
  7. POST SETTING CONCRETE TO BE 2500 PSI MINIMUM AT 28 DAYS.
  8. JOINT SEALANT SHALL BE FUEL AND OIL RESISTANT, COLOR IS GREY.

- INSTALLATION NOTES**
1. PRE-ASSEMBLE GATE FRAMES, HINGES AND HINGE POSTS, W/O LATCH ASSEMBLIES AND DROP PINS.
  2. STAGE ASSEMBLIES IN CLOSED POSITION, BLOCKED TO MEET REQUIRED CLEARANCES AND ELEVATIONS. PULL SLACK OUT OF HINGE ASSEMBLIES TO MINIMIZE GATE END SAG WHEN BLOCKING IS REMOVED.
  3. CAST HINGE POST PIERS AND FILL HINGE POSTS WITH CONCRETE. REMOVE BLOCKING WHEN CONCRETE HAS REACHED 1/2 OF ITS 28 DAY STRENGTH (1250 PSI).
  4. MAKE MINOR ADJUSTMENTS TO EVEN UP GATE LEAF ELEVATIONS BY REDISTRIBUTING LEVELING WASHERS IN HINGES.
  5. ASSEMBLE GATE LATCH ASSEMBLY HARDWARE INCLUDING LOCK GUARD CAN WITH SPACERS TO MAINTAIN REQUIRED CLEARANCES.
  6. TACK WELD ASSEMBLY INTO PLACE ON GATE LEAVES AND VERIFY PROPER GATE/LATCH OPERATIONS.
  7. COMPLETE WELDING OF LATCH ASSEMBLY.
  8. SET DROP RECEIVING SLEEVES IN CONCRETE.
  9. WELD HINGE PINS IN PLACE PER DETAIL 4/C-10.



**B SECURITY FENCE ELEVATION**  
C-12 SCALE: 3/8"=1'-0"

REVISION NO.	SYM.	DESCRIPTION	SHT./OF	DATE	APPROVED
		STATE OF HAWAII DEPARTMENT OF LAND AND NATURAL RESOURCES ENGINEERING DIVISION			
		LAVA TREE STATE MONUMENT PARK IMPROVEMENTS PHASE 1			
		GATE DETAILS			
		WEBLEY R. SEGAWA & ASSOCIATES, INC.			
		DESIGNED: RWD/MCB		SUBMITTED: <i>W. Lee</i>	
		DRAWN: DB/RWD		DATE: FEBRUARY 2010	
		CHECKED: NSF		SCALE: AS SHOWN	
		APPROVED: <i>W. Lee</i>		MAR 1 2010	DRAWING NO. C-12
		THIS WORK WAS PREPARED BY ME OR UNDER MY SUPERVISION			
		WEBLEY R. SEGAWA & ASSOCIATES, INC.			